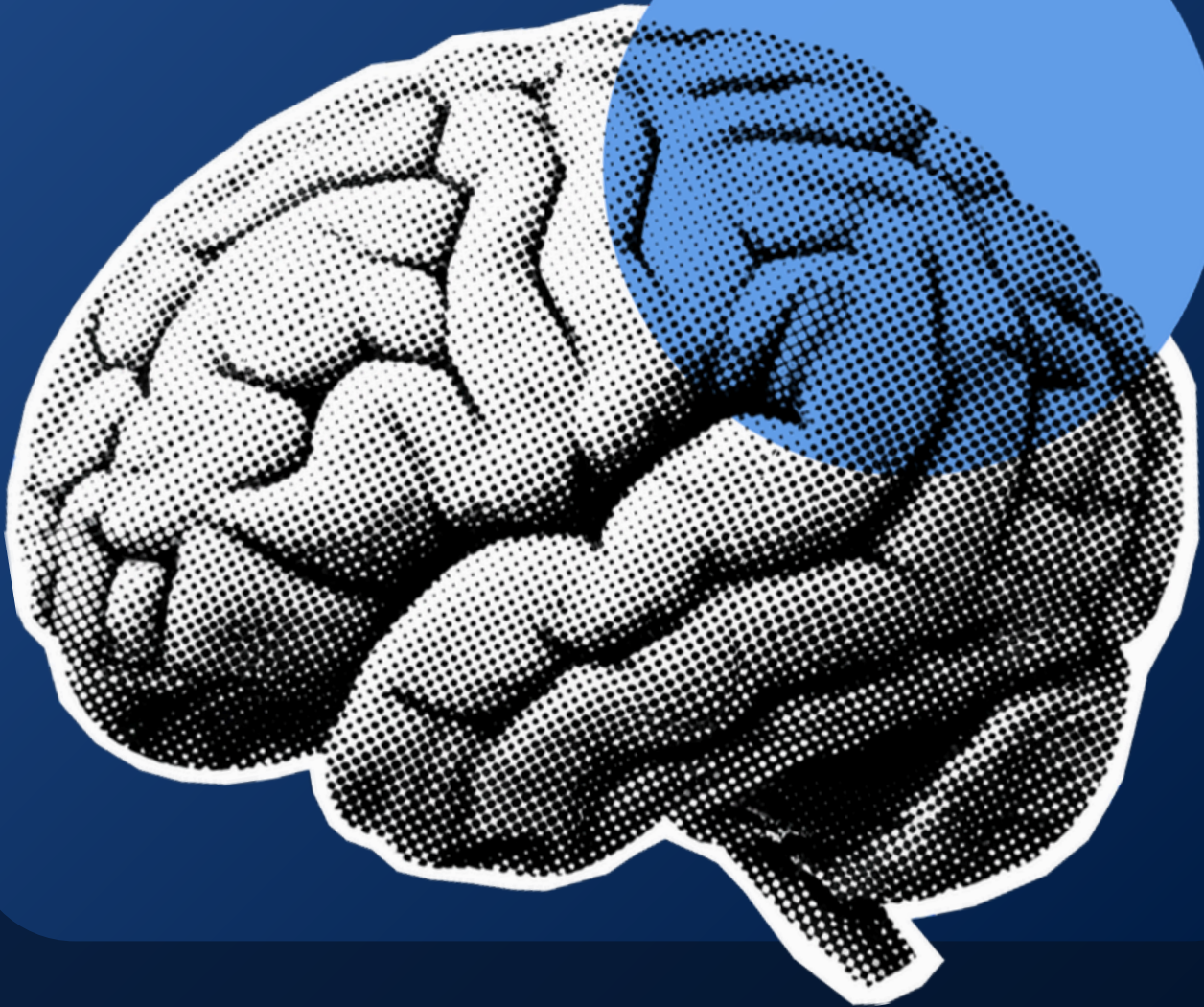




MATS
UNIVERSITY

NAAC
GRADE **A+**
ACCREDITED UNIVERSITY

STUDY IN INDIA
LEARN | DISCOVER | INNOVATE
The first University of Chhattisgarh
to be registered on STUDY IN INDIA



STEP INTO THE SCIENCE OF
HUMAN BEHAVIOR WITH AN
M.Sc Psychology



About University

Established in 2006 under the Chhattisgarh Private University Act, MATS University (Mahaveer Academy of Technology and Science University) is a respected private institution in Raipur, Chhattisgarh. Recognized by UGC under Section 2(f) and accredited with an "A+" grade by NAAC, it is also approved by AICTE, BCI, and NCTE. The university operates two campuses, one in central Raipur and another sprawling 80–130 acres in Aarang, housing multiple schools including Engineering, Management, Law, IT, Education, Fashion, Humanities, and Sciences. MATS is known for its holistic education, combining academic excellence with real-world readiness alongside robust infrastructure and industry partnerships.



UGC

Recognized Curriculum



NAAC A+

Accredited University



Degrees with Internship

Work & Earn while you Learn



19+ Years

Years of Legacy





Master of Science (M.Sc) in Psychology



Course Duration:
2 Years (4 Semesters)



Mode of Learning:
Classroom Learning



Eligibility:

Candidates must have completed a Bachelor's degree in Psychology from a recognised university.

Program Overview

The M.Sc in Psychology is a postgraduate program designed to provide students with a deep understanding of human behavior, mental processes, and psychological research. This regular on-campus program combines theoretical knowledge with practical training, helping students develop the skills required to analyze psychological issues and support mental well-being.

Through academic coursework, case studies, research projects, and practical exposure, students gain insights into areas such as cognitive psychology, counseling, behavioral science, and psychological assessment.

Program Features

Comprehensive Psychology Curriculum

The program covers major psychological theories, behavioral sciences, and modern psychological practices.

Practical and Laboratory Training

Students gain hands-on experience through psychological assessments, case studies, and lab-based activities.

Research-Focused Learning

Students learn research methods, data analysis, and report writing to conduct psychological research effectively.

Experienced Faculty Guidance

The program is taught by qualified faculty members with academic and research expertise in psychology.

Skills Acquired

By the end of the program, students develop a range of academic and professional skills, including:



Psychological Assessment Techniques



Research and Data Analysis



Counseling and Communication Skills



Behavioral Observation and Interpretation



Problem-Solving and Critical Thinking



Emotional Intelligence and Empathy



Mental Health Awareness and Intervention



Report Writing and Research Documentation

Who Are These Programs For?

This program is ideal for individuals who are interested in understanding human behavior and supporting mental well-being.

It is suitable for:

Graduates in Psychology who want advanced knowledge

Students interested in careers in counseling

Individuals planning to pursue research or Ph.D.

Professionals in education, social work, or HR

Students building a career in behavioral sciences

Admission Process

Apply Online

Application Review

Start Learning



Submit Documents

Fee Payment

Course Structure

Semester 1

Course code	Title of the Course	Credits
MAP-101	Basic Psychological Processes	4
MAP-102	Basic Research Methodology	4
MAP-103	Social Psychology	4
MAP-104	Psychology of Relationships	3
MAP-105	Positive Psychology	3
MAP -106	Childhood Disorders	3
MAP-107	Stress and Health	3
MAP-108	Practical & Field work	2
Value-Added Course	Yoga and Meditation	NC
Total		20

Semester 2

Course code	Title of the Course	Credits
MAP-201	Advance Psychological Processes	4
MAP-202	Advance Research Methodology	4
MAP-203	Group Processes and Cultural Psychology	4
MAP-204	Physiological Psychology and Health Behaviors	3
MAP-205	Community Psychology	3
MAP-206	Psychosocial Rehabilitation	3
MAP-207	Environment Psychology	3
MAP-208	Practical & Field work	2
Value-Added Course	Communication and soft skill	NC
Total		20

Semester 3

Course code	Title of the Course	Credits
MAP-301	Psychopathology	4
MAP-302	Psychological Assessment	4
MAP-303	Life Span developmen	4
MAP-304	Clinical Diagnosis – I	3
MAP-305	Psychotherapeutic Counseling – I	3
MAP-306	Educational and Instructional Psychology – I	3
MAP-307	Basics of Psychological Guidance and Counseling – I	3
MAP-308	Organizational Behavior – I	3
MAP-309	Human Resource Development and Management – I	3
MAP-310	Practical	2
Value-Added Course	Computer and its application	NC
Total		20

Semester 4

Course code	Title of the Course	Credits
MAP-401	Psychological Assessment and measurement	4
MAP-402	Personality and Indigenous Psychology	4
MAP-403	Internship	4
MAP-404	Clinical Diagnosis – II	3
MAP-405	Psychotherapeutic Counseling – II	3
MAP-406	Educational and Instructional Psychology – II	3
MAP-407	Basics of Psychological Guidance and Counseling – I	3
MAP-408	Organizational Behavior – II	3
MAP-409	Human Resource and Development Management – I	3
MAP-410	Practical & Field work	2
Value-Added Course	Internet and its application	NC
Total		20

Fee Structure

M.Sc Psychology	1st Year Fee	2nd Year Fee
Registration Fee	₹1,000	-
Course Fees	₹80,000	₹80,000
Total Fee	1,61,000	

Career Opportunities After M.Sc Psychology



**Counseling
Psychologist**



**Clinical Psychology
Assistant**



**Mental Health
Counselor**



**Human Resource
Specialist**



**Behavioral
Analyst**



**Research
Assistant**



**Academic
Lecturer**



**Child Development
Specialist**



**Rehabilitation
Counselor**



**Corporate
Trainer**

Graduates may also pursue higher studies such as Ph.D. in Psychology or specialized professional certifications.



Contact Us



Phone :

+91 9240271295



Email :

admission@onlinematsuniversity.com



Website :

onlinematsuniversity.com

